



On Berkeley's Beach (1908).

Courtesy of the Charles Moisan family



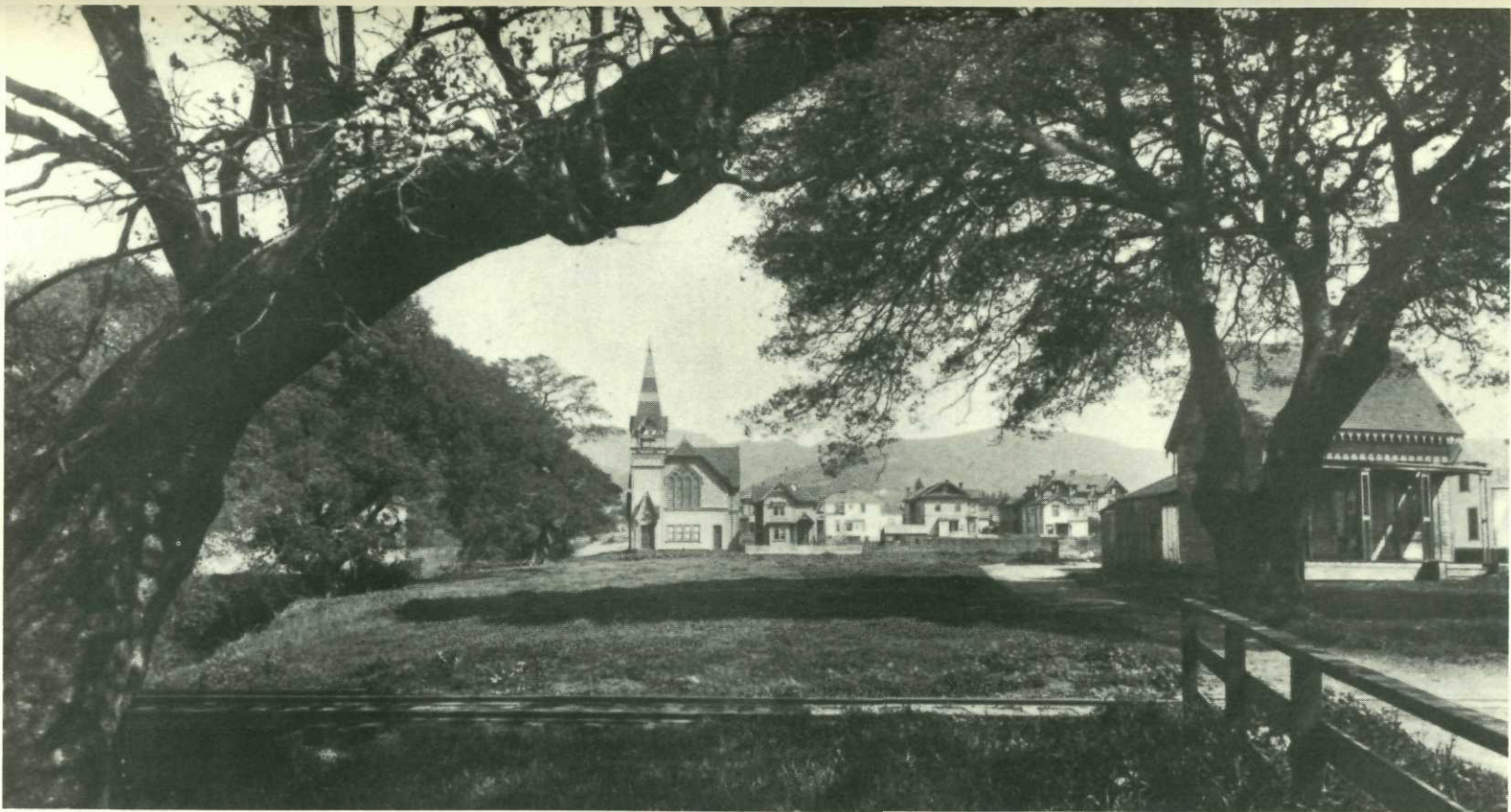
Berkeley Farm Dairy in Strawberry Canyon  
(c. 1905).



Cattle on the Hills (1889).

O.V. Lange, Photographer  
Berkeley Historical Society





On Shattuck Avenue, looking east toward Oxford Street. Strawberry Creek to the left now flows under Allston Way. The church is on the corner of Allston and Oxford (1889).

O.V. Lange, Photographer  
Berkeley Historical Society



North of Campus, looking East from what is now known as "Holy Hill." Euclid Avenue will run north-south just below the hill in the immediate foreground. The trees on the right grow along the north fork of Strawberry Creek. The present intersection of La Loma and Le Conte Avenues will lie beyond the barn and to the right (c. 1902).